



\$235,000



LONG LAKE 00 TORMEY ROAD



PROPERTY INFORMATION:

118' FF ON SPOKANE LAKE CANAL. 325' Deep, Level with Trees, Best lot available in upscale neighborhood, Public water available, Perfect for daylight basement, Installed boardwalk through wetland area to private dock. Boat to open waters on Long Lake.
MUST SEE!!!



DRIVING DIRECTIONS:

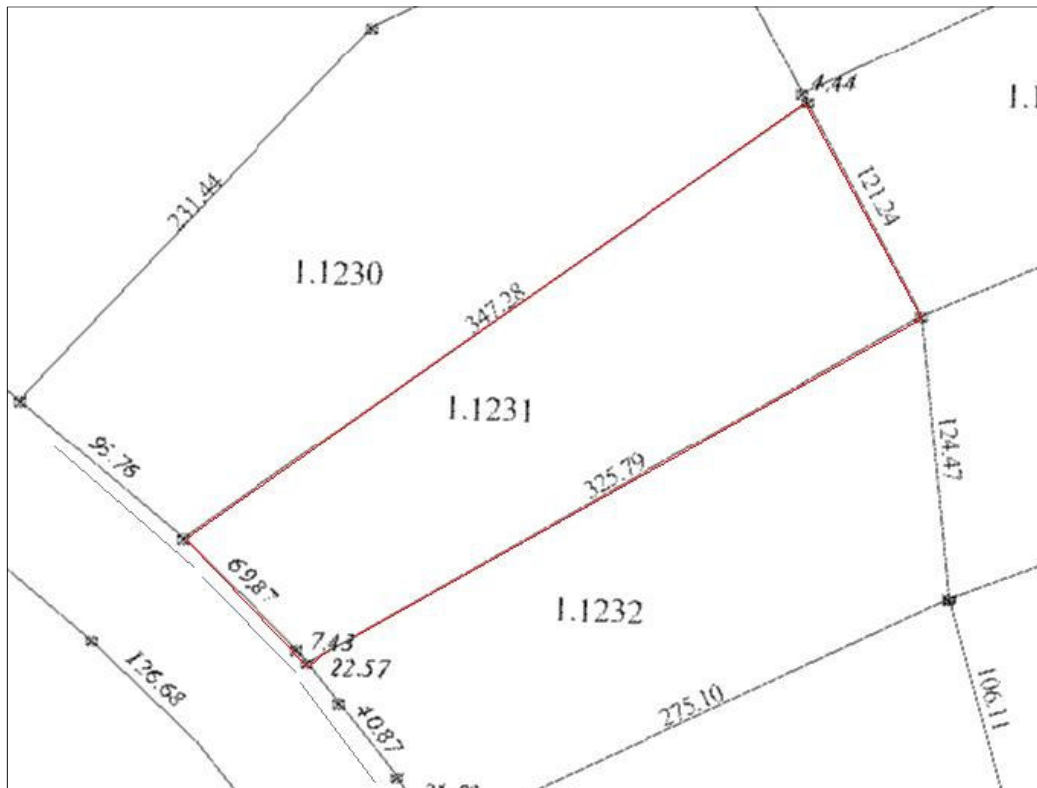
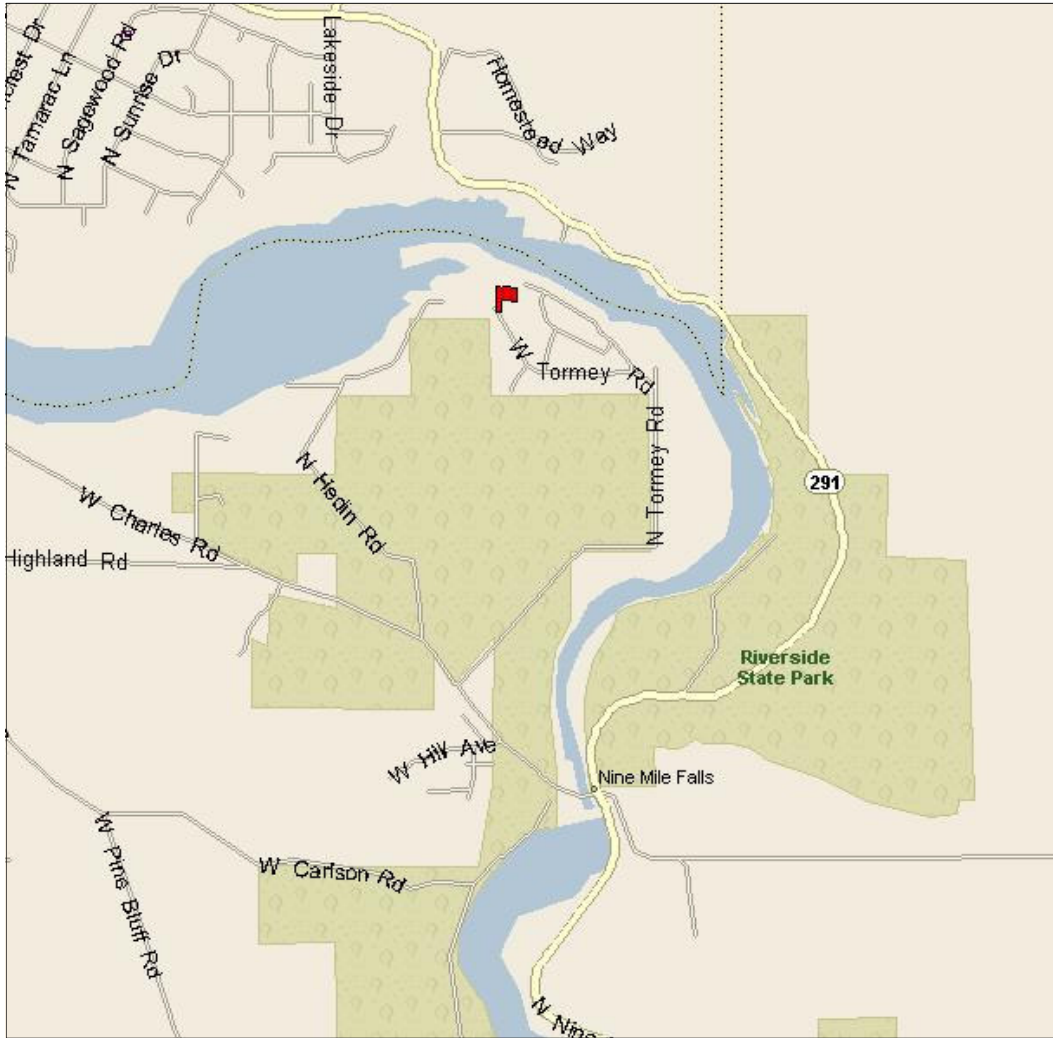
Take Francis West, which turns into HWY 291 or Nine Mile Falls Road, at the Nine Mile Falls sign, turn left on Charles, turn right on Tormey Road and Look for signs just prior to cul-de-sac

Century 21
Beutler - Waterfront



Kurt Miller, Agent
Century 21 Beutler-Waterfront
41 W. Riverside, Suite 110
Spokane, WA 99201
Office: 509-321-1134 / Cell: 509-991-3182





Information deemed reliable but not guaranteed.