



Dick Bockemuehl, Agent  
 CENTURY 21 Beutler-Waterfront  
 41 W. Riverside, Suite 110  
 Spokane, WA 99201  
 Office: 509-321-1126 / Cell: 509-951-4390

*Waterfront*

## DIAMOND LAKE 181 ELU BEACH RD



# \$409,000

### PROPERTY INFORMATION:

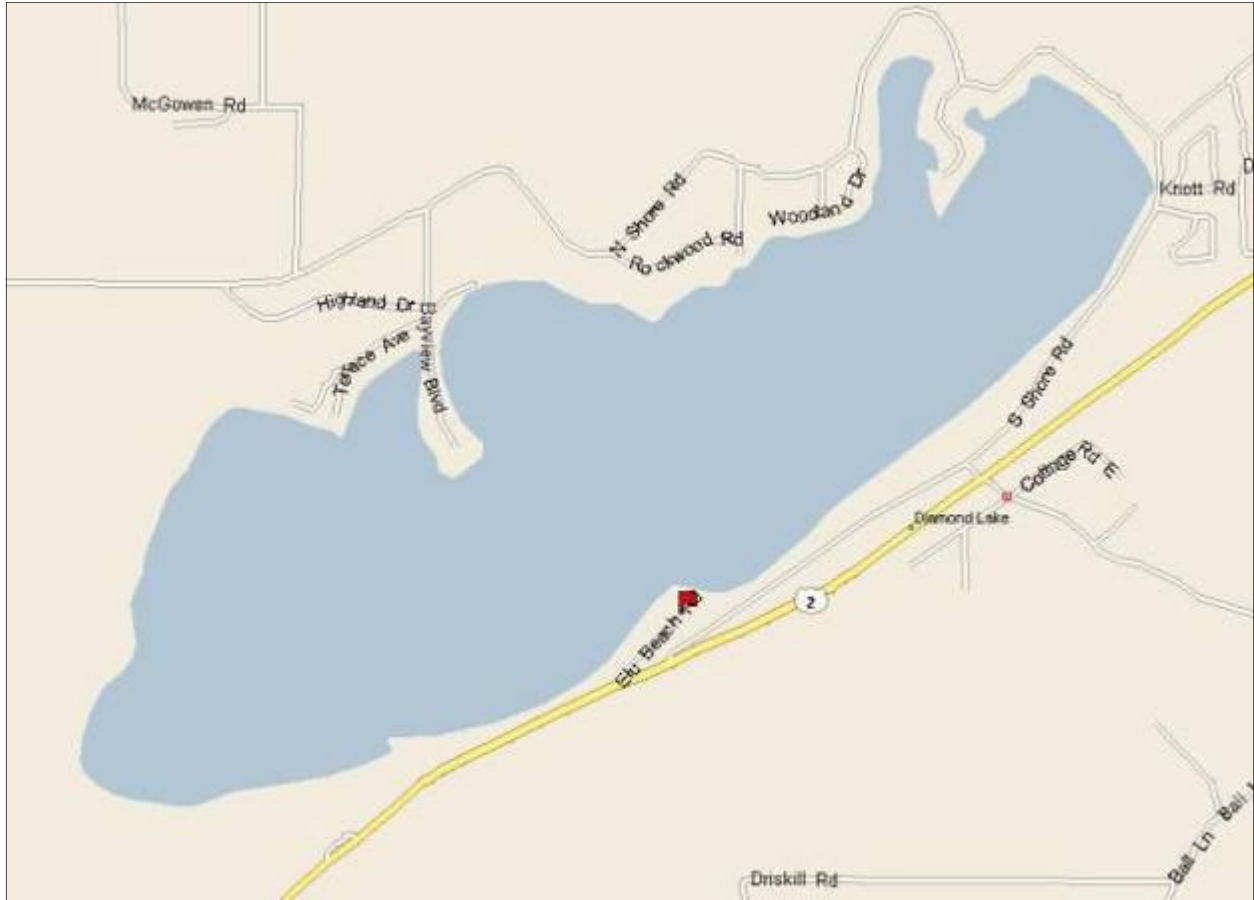
Premier flat, level lakefront lot on Diamond Lake with sandy beach. 25'ff frontage. Nicely remodeled, 1,184 sq ft., 3 bedroom, 1 bath home, plus separate 1 br/1ba guest quarters adjacent to the garage. Fenced yard. Room to expand. Quiet location at end of dead end road. Lake view facing NE. Carport, dock, public water/sewer.



41 W Riverside, Suite 110, Spokane, WA 99201 Office: 509.321.1121 Fax: 509.321.1131  
 1836 NW Blvd, Coeur d'Alene, Idaho 83814 Office: 208.765.5554 Fax: 208.765.5808



This information deemed reliable but not guaranteed.



**DRIVING DIRECTIONS:**

*US2 M to Diamond Lake. Turn on Ely Beach Rd. Drive 2/10th mi to end of Ely Beach Rd. Sign on property. Map in file.*

