



Dick Bockemuehl, Agent
 CENTURY 21 Beutler-Waterfront
 Office: 509-321-1126 / Cell: 509-951-4390
 dickb@c21waterfront.com
 www.c21waterfront.com
 www.parade-of-lakes.com

Waterfront

LONG LAKE 18724 N SPORTSMAN'S PARADISE LN



\$699,000

PROPERTY INFORMATION:

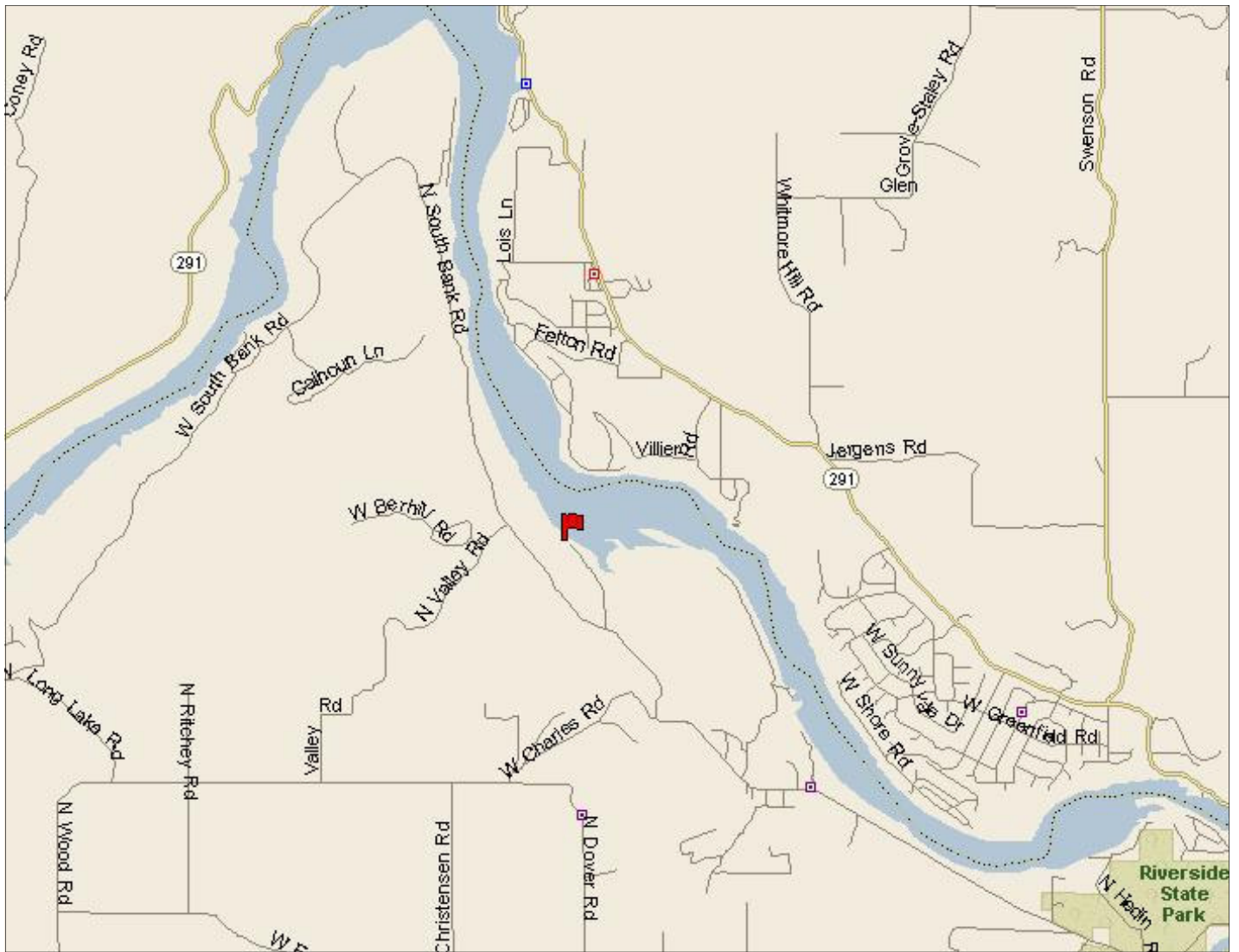
380' of Frontage, Newly remodeled Manufactured 3 Bedroom, 2 Bath, 1568 Square Feet, New 40' x 60 Shop, 10+ Acres, Excellent condition and ready for immediate occupancy, Deck, Dock, Septic and Well Installed.

This information deemed reliable but not guaranteed.



41 W Riverside, Suite 110, Spokane, WA 99201 Office: 509.321.1121 Fax: 509.321.1131
 1836 NW Blvd, Coeur d'Alene, Idaho 83814 Office: 208.765.5554 Fax: 208.765.5808





DRIVING DIRECTIONS:

Take Nine Mile Road then turn on Charles Rd. From Charles Rd turn right on South Bank Rd. Then, rt on Sportsman's Paradise Ln to the very end.

