



**Dick Bockemuehl, Agent**  
CENTURY 21 Beutler-Waterfront  
Office: 509-321-1126 / Cell: 509-951-4390  
dickb@21waterfront.com  
www.21waterfront.com  
www.parade-of-lakes.com

# Waterfront

## NEWPORT WASHINGTON 322392 HIGHWAY 2



# \$140,000

### PROPERTY INFORMATION:

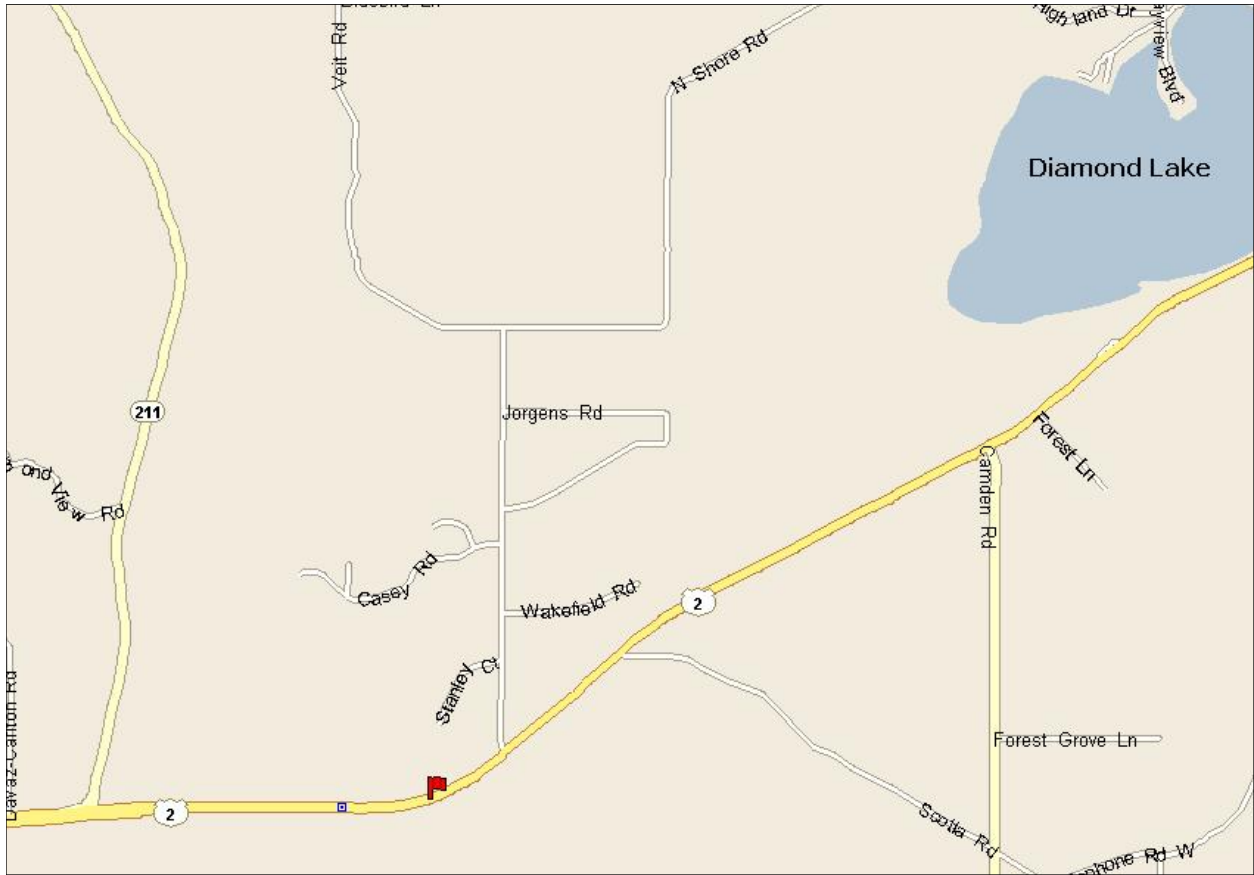
S Highway 2 frontage. 1.75 acre home site. 3 br 2 ba 1999 Mfg home. 240 sqft mother-in-law cottage. 1 car garage. Several storage buildings. Gentle sloping grounds. 2 highway approaches serve the property.

This information deemed reliable but not guaranteed.



41 W Riverside, Suite 110, Spokane, WA 99201 Office: 509.321.1121 Fax: 509.321.1131  
1836 NW Blvd, Coeur d'Alene, Idaho 83814 Office: 208.765.5554 Fax: 208.765.5808





**DRIVING DIRECTIONS:**

*US2 approximately 1 mile E of Highway 211 located on S side of US 2.*

