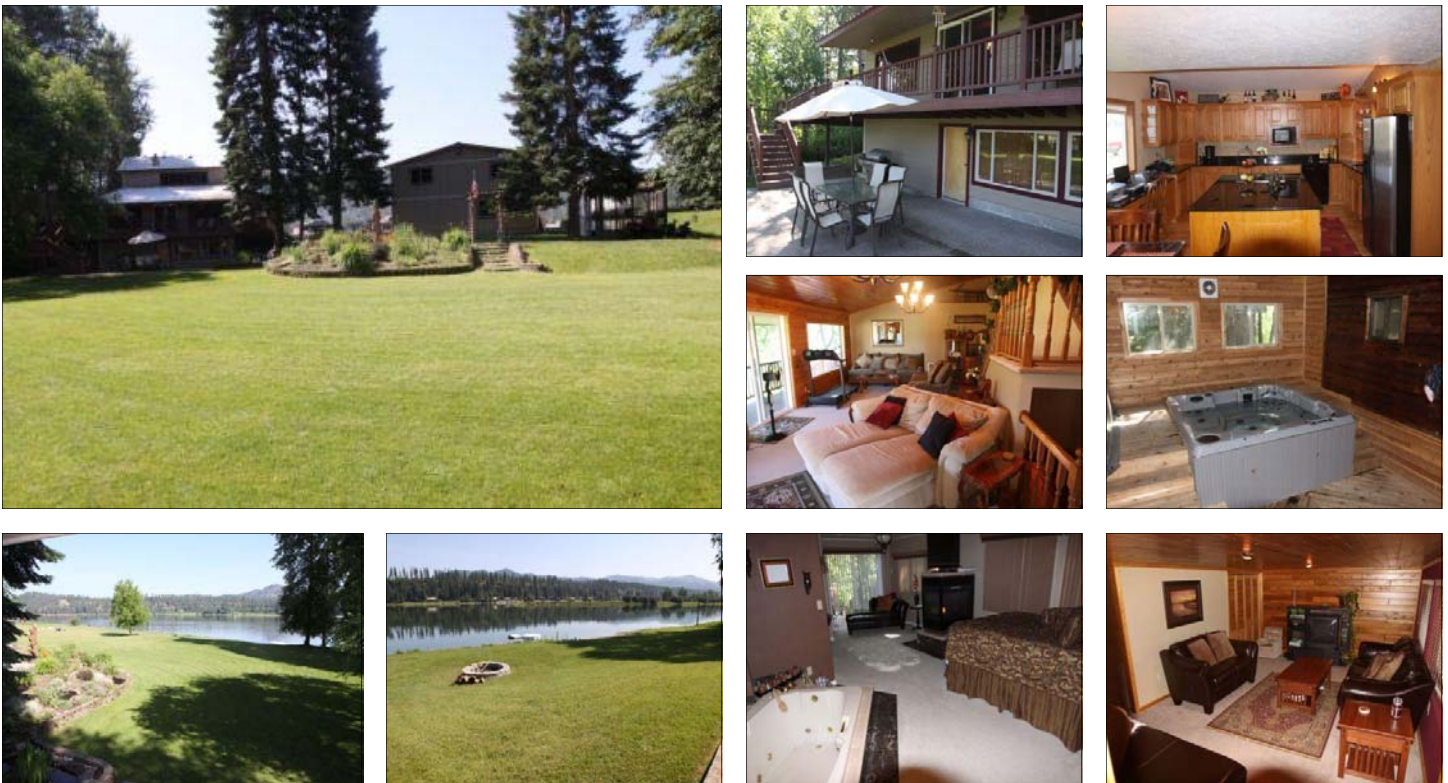




**Dick Bockemuehl, Agent**  
 CENTURY 21 Beutler-Waterfront  
 Office: 509-321-1126 / Cell: 509-951-4390  
 dickb@21waterfront.com  
 www.21waterfront.com  
 www.parade-of-lakes.com

# Waterfront

## PEND OREILLE RIVER WASHINGTON 612 Yergens Rd



# \$515,000

### PROPERTY INFORMATION:

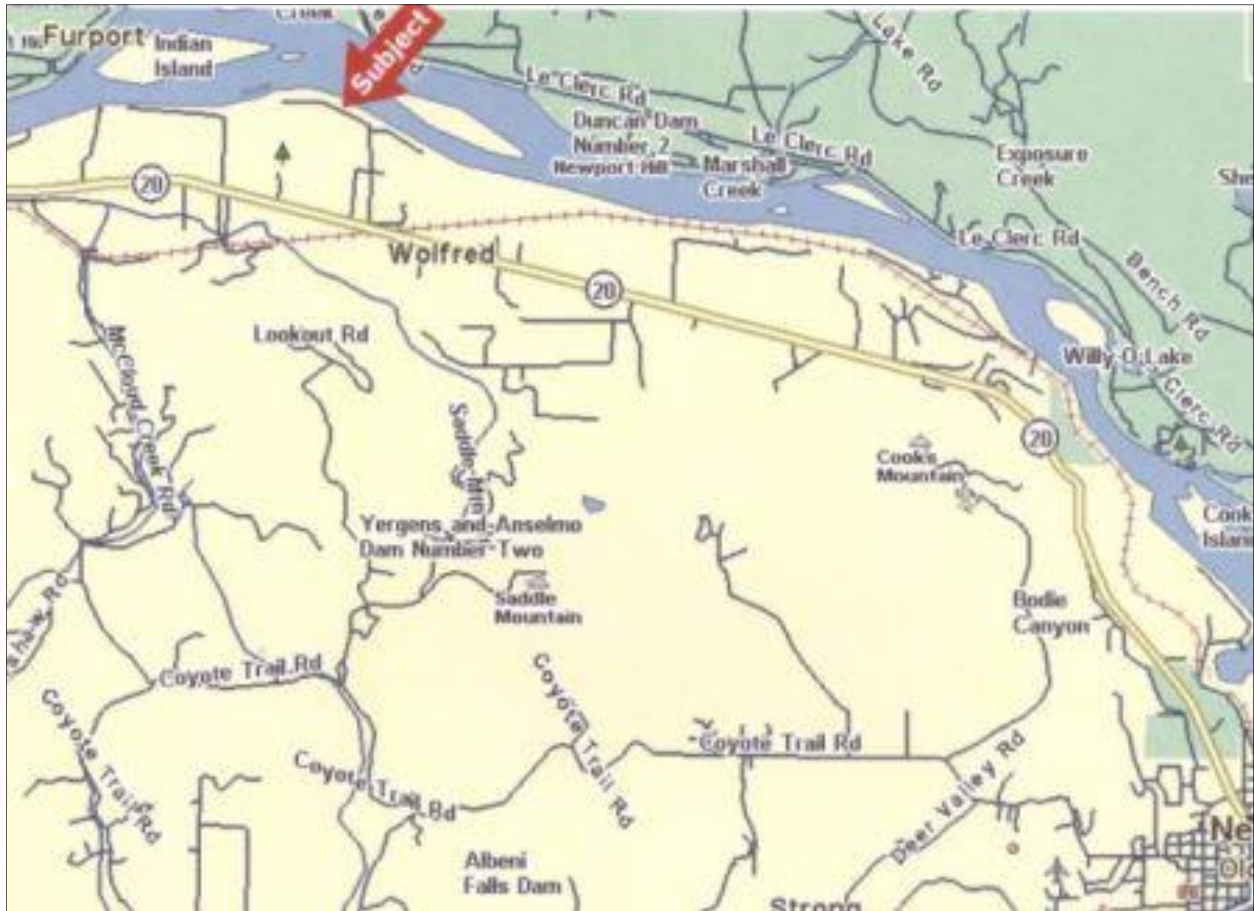
Close-in premier low-bank, grass to waters edge Pend Oreille River front property. Approx 141' ff Sandy Beach. Relatively free of milfoil. Nicely remodeled 5 br 4 ba home. Cedar spa room features oversized hot tub. Oversized master suite with gas fireplace and slider to private riverfront deck. New appliances and granite counter tops enhance family sized kitchen. Room for volleyball court.

This information deemed reliable but not guaranteed.



41 W Riverside, Suite 110, Spokane, WA 99201 Office: 509.321.1121 Fax: 509.321.1131  
 1836 NW Blvd, Coeur d'Alene, Idaho 83814 Office: 208.765.5554 Fax: 208.765.5808





**DRIVING DIRECTIONS:**

*HWY 20 approx 5 Mi NW of Newport. Turn Rt on Yergens Rd to 612. Sign on Property.  
Map in file.*

