



Kurt Miller, Agent
 CENTURY 21 Beutler-Waterfront
 Office: 509-321-1134 / Cell: 509-991-3182
 miller@21waterfront.com
 21waterfront.com
 Spokanelakes.com

Waterfront

SACHEEN LAKE 8862 FERTILE VALLEY RD



\$525,000

PROPERTY INFORMATION:

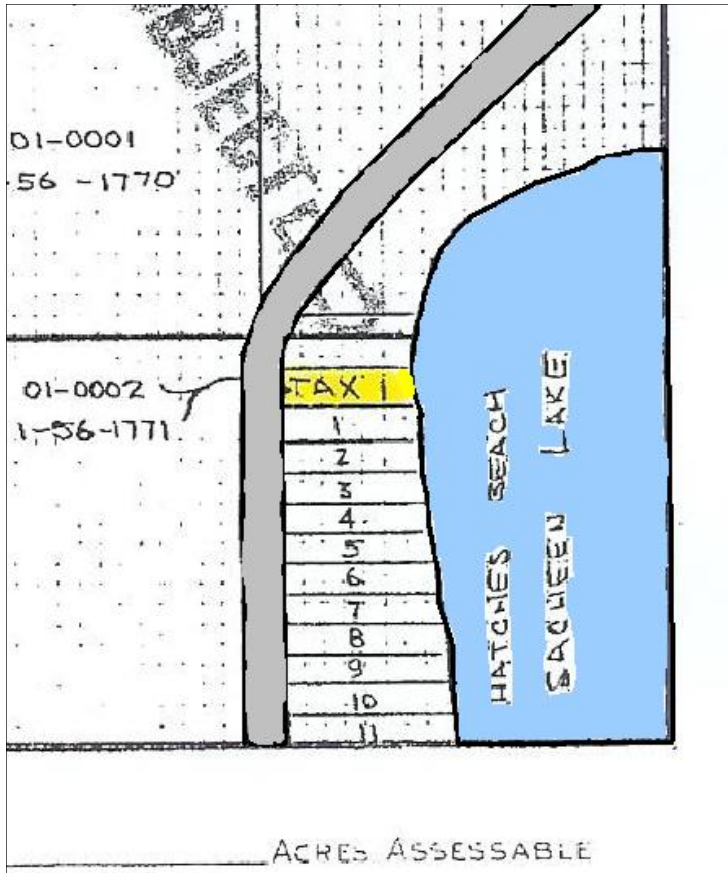
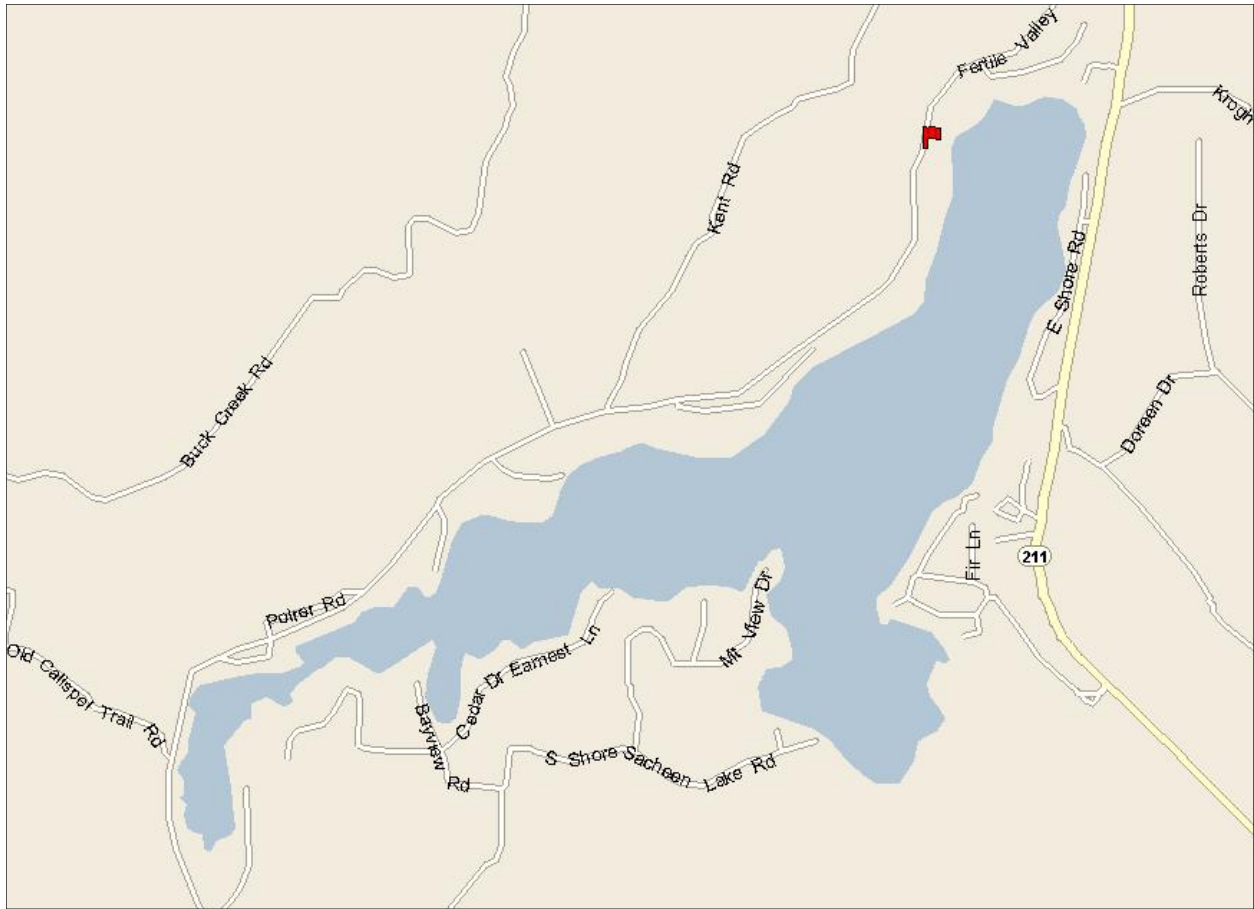
100'FF, 6 Bedrooms, 3 Bathrooms, 3 Car Garage, Dock, Deck, Southern Exposure, Guest quarters above garage, Lot has a gentle slope to water's edge, enjoy the gazebo by the water, County maintained road (snow removal), School bus and mail delivery to your front door. Great Sunsets! This is a MUST SEE!!!

This information deemed reliable but not guaranteed.



41 W Riverside, Suite 110, Spokane, WA 99201 Office: 509.321.1121 Fax: 509.321.1131
 1836 NW Blvd, Coeur d'Alene, Idaho 83814 Office: 208.765.5554 Fax: 208.765.5808





DRIVING DIRECTIONS:

From Spokane take HEY 2 North, at Hey 211 turn left, turn left at Fertile Valley Rd, look for address and signs.