



Dick Bockemuehl  
 Century 21 Beutler-Waterfront  
 41 W Riverside, Suite 110  
 Spokane, WA 99201  
 Office: 509.321.1126 / Cell: 509.951.4390

*Waterfront*

## PEND OREILLE RIVER WA PONDORAY SHORES-Wini Lane



**\$15,000 to \$25,000**

### PROPERTY INFORMATION:

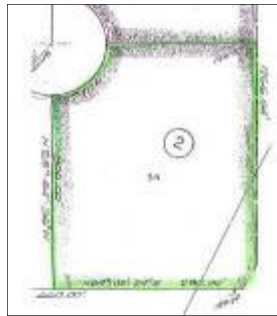
Recreation only, Secondary Lots, Lots Lie within 100 year flood plane, 4 Waterfront Community Access Lots within walking distance, Large Community Access playground, Paved Boat Launch nearby, Waterfront Access at affordable prices, Owner Contract Terms.

Information deemed reliable but not guaranteed.  
 Buyer to verify



41 W Riverside, Suite 110, Spokane, WA 99201 Office: 509.321.1121 Fax: 509.321.1131  
 1836 NW Blvd, Coeur d'Alene, Idaho 83814 Office: 208.765.5554 Fax: 208.765.5808





*DRIVING DIRECTIONS:*

*Cross the Usk Bridge then South to Pondoray Shores. Go 6/10 mile to Wini Lane, Turn left. Sign on Lots. Map in File.*



<b>Lot</b>	<b>Address</b>	<b>Dimensions</b>	<b>Price</b>
Lot 30	448 Wini Lane	100 x 200	\$15,000
Lot 31	500 Wini Lane	100 x 200	\$15,000
Lot 32	554 Wini Lane	100 x 200	\$15,000
Lot 33	620 Wini Lane	300 x 200	\$25,000
Lot 34	800 Wini Lane	300 x 250	\$25,000